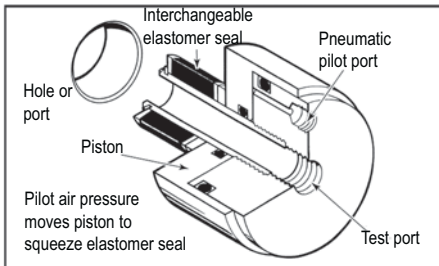


FI



Technical Data

Seals: Neoprene or Urethane (Standard)
Other seal materials available upon request

Materials: Aluminum and Stainless Steel

Test Pressure: Vacuum to 120 psi.

The connector and test piece should be secured or fixtured to prevent separation at unsafe pressure and to provide the best elastomer life.

Pneumatic Pilot Operation: Requires 60 psi to 90 psi air supply depending on the seal material, surface finish and test pressure. Urethane seals are recommended for high duty or abrasive applications and may require higher pilot pressure to seal rough surfaces.

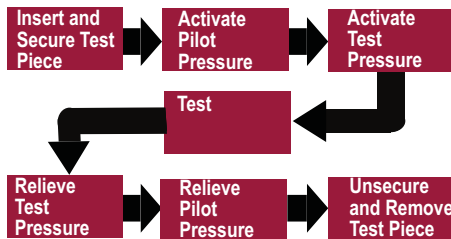
Extensions

Connectors are available with extensions to fit in tight locations or to provide closer center-to-center mounting to seal multiple test ports. Please visit our web site or contact us directly for additional information

FI/FE Similarities



Operation



Applications

Leak Testing: Pressure decay, water dunk, helium mass spectrometer, etc.

Other Uses: Filling, material handling, pressure and proof testing, manufacturing processes, flushing, etc.

Components: Cylinders, tanks, valves, regulators, meters, plastic containers, plumbing fixtures, pumps, medical devices, filters, pressure vessels, tube assemblies, etc.

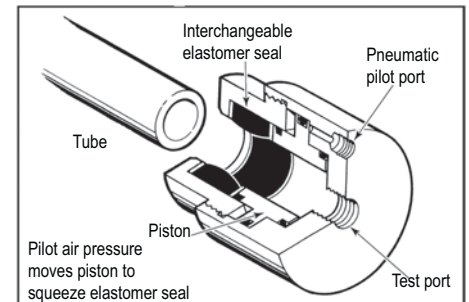
High speed automated seals provide big gains in productivity

Improved quality in your test and manufacturing process

Excellent for robotics and pick-and-place applications

Soft touch elastomers seal without scratching or damaging your product

FE



Technical Data

Seals: Neoprene or Urethane (Standard)
Other seal materials available upon request

Materials: Aluminum and Stainless steel

Test Pressure: Vacuum to 500 psi. The connector and test piece should be secured or fixtured to prevent separation at unsafe pressure and to provide the best elastomer life.

Pilot Operation: Generally requires 60 to 90 psi air supply when using neoprene seals with smooth parts. Higher pressure is required for rough parts, urethane seals, or extended sealing ranges. Urethane seals and the Pilot Booster (page19) are required to seal threads and similar features.

For more details, options and replacement seal material information log on to www.fastestinc.com

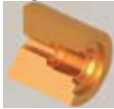
Female Pipe Threads



Seals these thread styles:
NPTF per SAE J476a
BSPP per ISO 228
BSPT per ISO 7
JIS B8363 and B2351

Connector Thread Size	Connector and Main Seal Set	Main Seal Set Includes seal(s) and metal parts for one complete seal change	Bulk Pack Includes 5 seal changes per package
1/8"	FI01-1/8NPT	FIS01-1/8NPT	FIB01-1/8NPT
1/4"	FI1-1/4NPT	FIS1-1/4NPT	FIB1-1/4NPT
3/8"	FI2-3/8NPT	FIS2-3/8NPT	FIB2-3/8NPT
1/2"	FI2-1/2NPT	FIS2-1/2NPT	FIB2-1/2NPT
3/4"	FI3-3/4NPT	FIS3-3/4NPT	FIB3-3/4NPT
1"	FI4-1NPT	FIS4-1NPT	FIB4-1NPT
1 1/4"	FI5-1 1/4NPT	FIS5-1 1/4NPT	FIB5-1 1/4NPT
1 1/2"	FI6-1 1/2NPT	FIS6-1 1/2NPT	FIB6-1 1/2NPT
2"	FI7-2NPT	FIS7-2NPT	FIB7-2NPT
2 1/2"	FI7-2 1/2NPT	FIS7-2 1/2NPT	FIB7-2 1/2NPT

SAE O-Ring Port



O-Ring Port per SAE J1926 or ISO 11926

-4 (7/16-20)	FI01-4SAE	FIS01-4SAE	FIB01-4SAE
-6 (9/16/18)	FI1-6SAE	FIS1-6SAE	FIB1-6SAE
-8 (3/4/16)	FI2-7SAE	FIS2-7SAE	FIB2-7SAE
-10 (7/8/14)	FI3-8SAE	FIS3-8SAE	FIB3-8SAE
-12 (1 1/16-12)	FI3-9SAE	FIS3-9SAE	FIB3-9SAE
-14 (1 3/16-12)	FI4-10SAE	FIS4-10SAE	FIB4-10SAE
-16 (1 5/16-12)	FI4-11SAE	FIS4-11SAE	FIB4-11SAE

ISO O-Ring Port

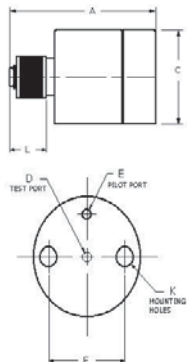


O-Ring Port per ISO 6149

Metric Flat Face Port per DIN 3852 Part 1 (ISO 9974)

M10 X 1.0	FI01-M10	FIS01-M10	FIB01-M10
M12 X 1.5	FI1-M12	FIS1-M12	FIB1-M12
M14 X 1.5	FI1-M14	FIS1-M14	FIB1-M14
M16 X 1.5	FI1-M16	FIS1-M16	FIB1-M16
M18 X 1.5	FI2-M18	FIS2-M18	FIB2-M18
M20 X 1.5	FI2-M20	FIS2-M20	FIB2-M20
M22 X 1.5	FI2-M22	FIS2-M22	FIB2-M22
M24 X 1.5	FI3-M24	FIS3-M24	FIB3-M24
M26 X 1.5	FI3-M26	FIS3-M26	FIB3-M26
M27 X 2	FI3-M27	FIS3-M27	FIB3-M27

NOTE: Please contact your Sales Representative for pricing, delivery, replacement seals, accessories and your custom requirements.

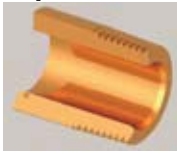


FI Connector Dimensions

FI	A	C	D	E	F	G	H	J	K	L†	Flow Dia.
FI01	1.98	1.25	10-32 UNF	10-32 UNF	.80	.40	.48 .57	.62 .76	10-32 UNF	.48	0.06"
FI1	2.44	1.57	1/8"	1/8"	1.02	.51	.57	.88	1/4-28	.57	0.13"
FI2			NPTF	NPTF			.57	1.07	UNF		
FI3	2.61	2.36	1/8"	1/8"	1.60	.80	.71	1.26	1/4-28	.71	0.21"
FI4			NPTF	NPTF			.71	1.57	UNF		
FI5	3.68	3.49	1/2"	1/8"	2.31	1.16	1.24	1.88	1/4-28	1.24	0.56"
FI6			NPTF	NPTF			1.24	2.13	UNF		
FI7	3.36	4.20	3/4"	1/8"	3.00	1.50	1.33	2.75	1/4-28	1.33	0.92"
FI8			NPTF	NPTF				UNF			

For more details, options and replacement seal material information log on to www.fastestinc.com

Male Pipe Thread



Seals these thread styles:
NPTF per SAE J476
BSPP per ISO 228
BSPT per ISO 7

Connector Thread Size	Connector and Main Seal Set	Main Seal Set <small>Includes seal(s) and metal parts for one complete seal change</small>	Bulk Pack <small>Includes 5 seal changes per package</small>
1/8"	FE01-1/8 NPT	FES01-1/8 NPT	FEB01-1/8 NPT
1/4"	FE1-1/4 NPT	FES1-1/4 NPT	FEB1-1/4 NPT
3/8"	FE1-3/8 NPT	FES1-3/8 NPT	FEB1-3/8 NPT
1/2"	FE2-1/2 NPT	FES2-1/2 NPT	FEB2-1/2 NPT
3/4"	FE2-3/4 NPT	FES2-3/4 NPT	FEB2-3/4 NPT
1"	FE2-1 NPT	FES2-1 NPT	FEB2-1 NPT
1 1/4"	FE3-1 1/4 NPT	FES3-1 1/4 NPT	FEB3-1 1/4 NPT
1 1/2"	FE3-1 1/2 NPT	FES3-1-1/2 NPT	FEB3-1 1/2 NPT
2"	FE4-2 NPT	FES4-2 NPT	FEB4-2 NPT

Male Inch Threads



All Male Inch Straight Threads
Common Examples:
O-Ring Face Seal per SAE J1453
37° Flare per SAE J514
45° Flare per SAE J512/513
24° Cone per SAE J514

7/16"	FE01-0450UR	FES01-0450UR	FEB01-0450UR
1/2"	FE1-0510UR	FES1-0510UR	FEB1-0510UR
9/16"	FE1-0570UR	FES1-0570UR	FEB1-0570UR
5/8"	FE1-0640UR	FES1-0640UR	FEB1-0640UR
11/16"	FE1-0700UR	FES1-0700UR	FEB1-0700UR
3/4"	FE2-T0760UR	FES2-T0760UR	FEB2-T0760UR
13/16"	FE2-T0800UR	FES2-T0800UR	FEB2-T0800UR
7/8"	FE2-T0885UR	FES2-T0885UR	FEB2-T0885UR
1"	FE2-T1010UR	FES2-T1010UR	FEB2-T1010UR
1 1/16"	FE2-3/4NPT	FES2-3/4 NPT	FEB2-3/4 NPT
1 3/16"	FE2-T1200UR	FES2-T1200UR	FEB2-T1200UR
1 1/4"	FE2-T1260UR	FES2-T1260UR	FEB2-T1260UR
1 5/16"	FE2-1NPT	FES2-1NPT	FEB2-1NPT

Male Metric Threads



Male Metric Straight Threads
Common Examples:
24° Cone Flareless per ISO 8434-1 and-4
24° Cone Flareless per JIS B2351
24° Cone Flareless per DIN 3902/3853/3861
60° Cone per DIN 7831/7647

M10	FE01-1/8NPT	FES01-1/8 NPT	FEB01-1/8 NPT
M12	FE1-0480UR	FES1-0480UR	FEB1-0480UR
M14	FE1-0570UR	FES1-0570UR	FEB1-0570UR
M16	FE1-0640UR	FES1-0640UR	FEB1-0640UR
M18	FE1-0720UR	FES1-0720UR	FEB1-0720UR
M20	FE2-T0800UR	FES2-T0800UR	FEB2-T0800UR
M22	FE2-T21UR	FES2-T21UR	FEB2-T21UR
M24	FE2-T22UR	FES2-T22UR	FEB2-T22UR
M26	FE2-T23UR	FES2-T23UR	FEB2-T23UR
M27	FE2-T1075UR	FES2-T1075UR	FEB2-T1075UR

NOTE: Please contact your Sales Representative for pricing, delivery, replacement seals, accessories and your requirements.

For more details, options and replacement seal material information log on to www.fastestinc.com

Pilot Pressure Booster

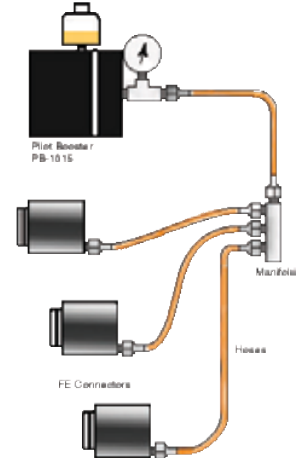
Used with FE Connectors for sealing external threads or irregular surfaces

Features

- Uses 30–65 psi regulated compressed air to produce up to 600 psi hydraulic pressure
- Simple in-line installation with standard FE Connectors
- Safe air over oil pressure intensifier with limited displacement
- Multiple FE Connector capacity
- Compact, lightweight design 4 1/2" x 4 1/4" body size weighs less than 5 pounds

Booster Installation for Multiple FE Connector Applications

Production testing of threads and hard to seal surfaces can now be automated using the sealing system of a PB-1015 Pilot Pressure Booster and a proper sized urethane seal set in a FE Connector.



The Pilot Pressure Booster has the capacity to handle multiple FE Connectors for multiple station applications. The table below lists the maximum number of FE Connectors that can be piloted by one booster. Consult the PB-1015 product instructions for complete installation information. The booster capacity to handle multiple connectors is also affected by the hydraulic fluid displaced within the entire system.

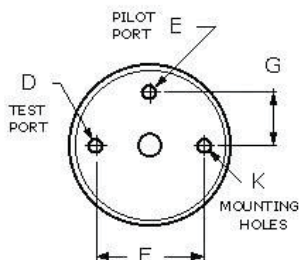
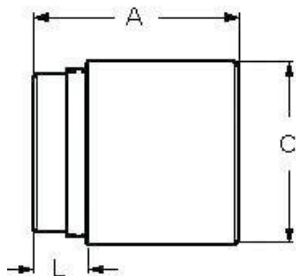
FE01	8 FE Connectors
FE1	4 FE Connectors
FE2	2 FE Connectors
FE3	1 FE Connector
FE4	1 FE Connector

Technical Data

Seals:	Nitrile
Materials:	luminum
Inlet Pressure:	65 psi max.
Outlet Pressure:	600 psi max.
Pressure Ratio:	9.2:1
Displacement:	1.5 in. ³
Inlet Port:	1/4" NPTF

Part # Description

PB-1015	Pilot Pressure Booster
PBH32	1 quart hydraulic oil, 60 SSU petroleum based
PBA-01	10-32 Accessory Kit for FE01 Connectors Includes: 1 qt. oil, 0-600 psi gauge, run tee, 10-32 male x 1/8" NPTF male – 72" length hose
PBA-02	1/8" NPTF Accessory Kit for FE1-FE6 Connectors Includes: 1 qt. oil, 0-600 psi gauge, run tee, 1/8" NPTF male x 1/8" NPTF male – 72" length hose
PBG022600	Gauge 0-600 psi, 1/8" mpt
AT021R	Run Tee 1/8" NPTF
H012X036	Hose – 10-32 male x 1/8" NPTF male – 36" length
H012X072	Hose – 10-32 male x 1/8" NPTF male – 72" length
H022X018	Hose – 1/8" NPTF male x 1/8" NPTF male – 18" length
H022X036	Hose – 1/8" NPTF male x 1/8" NPTF male – 36" length
H022X072	Hose – 1/8" NPTF male x 1/8" NPTF male – 72" length
A02M3	Manifold – 1/8" NPTF inlet w/three 1/8" NPTF outlets
A02M4	Manifold – 1/8" NPTF inlet w/four 1/8" NPTF outlets
A02M5	Manifold – 1/8" NPTF inlet w/five 1/8" NPTF outlets



FE Connector Dimensions

FE	A	C	D	E	F	G	K*	L
FE01	2.05	1.49	1/8" NPTF	10-32 UNF	1.10	.55	10-32 UNC	.58
FE1	2.72	2.22	1/4" NPTF	1/8" NPTF	1.62	.81	1/4-28 UNC	.61
FE2	3.50	3.11	1/2" NPTF	1/8" NPTF	2.50	1.25	1/4-28 UNC	.69
FE3	4.48	4.23	1" NPTF	1/8" NPTF	3.25	1.63	1/4-28 UNC	.89
FE4	4.60	5.48	1 1/2" NPTF	1/8" NPTF	4.25	2.13	1/4-28 UNC	.89

*FE4, has 3 mounting holes

For more details, options and replacement seal material information log on to www.fastestinc.com