

TwistMate®

FastTest®
Your Productivity Connection

- ✓ Finger Tighten Seals to 10,000 psi for Pneumatic and Hydraulic Testing
- ✓ Safe, Reliable, Leak Tight Connections to Threaded Ports and Fittings
- ✓ Eliminate Thread or Product Damage, Sealants and Wrench Tightening
- ✓ Durable Stainless Steel Construction Available in Multiple Thread Profiles



TwistMate Threaded Connectors

FasTest's complete product family of **TwistMate** connectors, plugs and caps provide fast leak tight threaded connections for testing, filling, flushing, plugging, calibrating or venting applications. Simply spin our connectors finger-tight onto thread until face seal contacts test piece. **TwistMates** seal automatically when the system is pressurized. Air, gas or hydraulic pressure in the system provides a sealing force that presses the main seal against the face of the threads. This automatic internal piston action maintains the seal with minimum pressure.

Connectors for Internal and External Threads

FasTest's complete line of internal "MIT" and external "MET" connectors are ideal for a fast, reliable and safe sealing method in leak testing and production applications. The elimination of traditional methods using tape, sealant, wrench tightening that damage threads deliver a fast and continuous return on your connector investment.

- Pressure assisted grip and seal technology
- Available in NPT, SAE, metric and special thread profiles
- Repair kits available for extended connector service life
- Finger-tight pneumatic or hydraulic connections from vacuum to 10,000 psi
- Stainless steel construction for corrosion resistance
- Reduce production losses, retest time, scrap and test damage repair costs



MIT Style for Internal Threads

Applications:

- Water dunk leak testing
- Leak, flow, flushing or washing
- Cylinders, manifolds, valves, pumps, filters and assemblies
- Bubble, pressure decay and mass spectrometer testing
- Heat exchangers, brake and steering system assemblies
- Capping and plugging pipes, fittings or hose ends



MET Style for External Threads

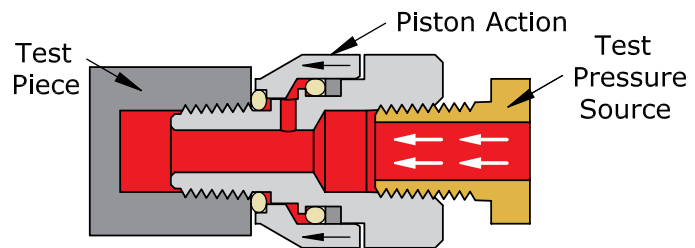


TwistMate MIT's for Internal Threads

The TwistMate Technology

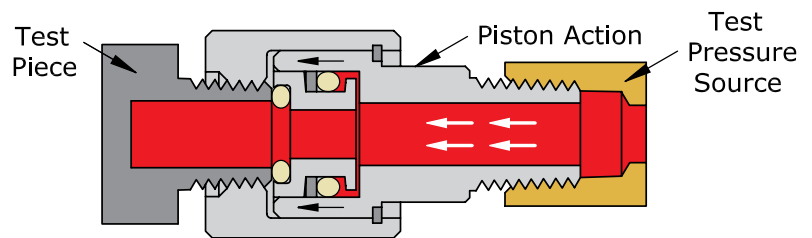
The **TwistMate** family of products use an innovative “*twist to connect*” and pressure assisted grip and seal technology to deliver a fast, safe and repeatable high pressure or vacuum testing connection in threaded ports or tubing. This sealing technique creates an improved seal as pressures increase and eliminates the traditional sealing methods using tape and wrenches that can damage internal or external threads.

“MIT” Connectors for Internal Threads



1. Spin **TwistMate** into the threaded port until the seal makes contact.
2. Introduce the media and pressure. The external sleeve automatically moves toward the test piece enhancing the seal squeeze. Vacuum applications will require finger tightening.

“MET” Connectors for External Threads



1. Spin **TwistMate** on to the threaded port until the seal makes contact.
2. Introduce the media and pressure. The internal piston automatically moves toward the test piece enhancing the seal squeeze. Vacuum applications will require finger tightening.

TwistMate MET's for External Threads

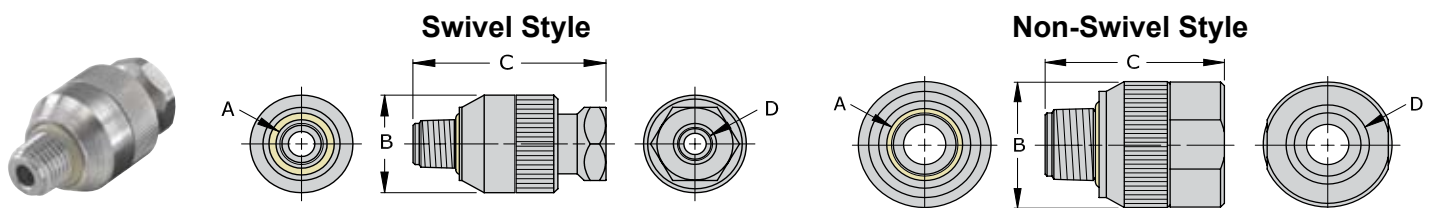


“Twist to Connect” Connectors for Female Threads



TwistMates unique “twist to connect” and pressure assisted grip and seal delivers fast, safe and repeatable threaded connections. Simply twist the connector to finger tight for an instant leak tight and high pressure connection.

- Available in NPT, BSPP, BSPT and SAE thread profiles
- Plug versions are also available to quickly seal a threaded port
- Instant connections up to 10,000 psi eliminates tape, sealants and wrenches
- Swivel styles allows easy installation while connected to a supply line
- No damage to threaded parts
- Durable stainless steel construction



For NPT Threads (per SAE J476 or ANSI B1.20)

Part Number	Thread Size Dim “A”	Diameter Dim “B”	Length Dim “C”	Thread Size Dim “D”	Rating PSI	Housing Style	Seal Material	Repair Kit	Main Seals Package (5)
MIT-022021	1/8” NPT	0.82”	1.68”	1/8” NPT	5000	Swivel	Urethane	MITR-020	S1109-U70
MIT-042041	1/4” NPT	1.00”	1.88”	1/4” NPT	5000			MITR-040	S1111-U70
MIT-062061	3/8” NPT	1.18”	2.09”	3/8” NPT	4000			MITR-060	S1113-U70
MIT-082081	1/2” NPT	1.36”	2.57”	1/2” NPT	4000			MITR-080	S1209-U70
MIT-022021X	1/8” NPT	0.82”	1.24”	1/8” NPT	5000	Non Swivel	Urethane	MITR-02	S1109-U70
*MITC-022021X	1/8” NPT	0.82”	1.24”	1/8” NPT	5000			MITR-02	S1010-U70
MIT-042041X	1/4” NPT	1.00”	1.41”	1/4” NPT	5000			MITR-04	S1111-U70
*MITC-042041X	1/4” NPT	1.00”	1.41”	1/4” NPT	5000			MITR-04	S1013-U70
MIT-062061X	3/8” NPT	1.18”	1.48”	3/8” NPT	4000			MITR-06	S1113-U70
MIT-082081X	1/2” NPT	1.36”	1.85”	1/2” NPT	4000			MITR-08	S1209-U70
MIT-122121X	3/4” NPT	1.68”	1.94”	3/4” NPT	4000			MITR-12	S1213-U70
MIT-162161X	1” NPT	2.00”	2.07”	1” NPT	4000			MITR-16	S1216-U70
MIT-202201X	1-1/4” NPT	2.38”	2.13”	1-1/4” NPT	4000			MITR-20	S1222-U70
MIT-242241X	1-1/2” NPT	2.74”	2.40”	1-1/2” NPT	3000			MITR-24	S1327-U70
MIT-322161X	2” NPT	3.47”	2.68”	1” NPT	2500			MITR-32	S1331-U70
MIT-402161X	2-1/2” NPT	3.97”	3.42”	1” NPT	1500			MITR-40	S1335-U70
MIT-482161X	3” NPT	4.73”	3.68”	1” NPT	1500			MITR-48	S1340-U70
MIT-642161X	4” NPT	5.73”	3.68”	1” NPT	1000			MITR-64	S1348-U70

Notes:

For additional **TwistMate** sizes and configurations consult factory.

Optional seal materials available are FKM (Viton) and EPDM.

Examples: MIT-022021X**V** = FKM MIT-022021X**E** = EPDM

*For threads in curved surfaces.

“Twist to Connect” Connectors for Female Threads

For NPT Threads, **High Pressure** (per SAE J476 or ANSI B1.20)

Part Number	Thread Size Dim “A”	Diameter Dim “B”	Length Dim “C”	Thread Size Dim “D”	Rating PSI	Housing Style	Seal Material	Repair Kit	Main Seals Package (5)
MITH-022021X	1/8” NPT	0.82”	1.24”	1/8” NPT	10,000	Non Swivel	Urethane	MITR-02	S1109-U70
MITH-042041X	1/4” NPT	1.00”	1.41”	1/4” NPT	10,000			MITR-04	S1111-U70
MITH-062061X	3/8” NPT	1.18”	1.48”	3/8” NPT	10,000			MITR-06	S1113-U70
MITH-082081X	1/2” NPT	1.36”	1.85”	1/2” NPT	8000			MITR-08	S1209-U70
MITH-122121X	3/4” NPT	1.68”	1.94”	3/4” NPT	7500			MITR-12	S1213-U70
MITH-162161X	1” NPT	2.00”	2.07”	1” NPT	6500			MITR-16	S1216-U70

For Female SAE O-Ring Boss Threads (per SAE J1926 or ISO 11926)

Part Number	Thread Size Dim “A”	Diameter Dim “B”	Length Dim “C”	Thread Size Dim “D”	Rating PSI	Housing Style	Seal Material	Repair Kit	Main Seals Package (5)
MIT-034021X	-3 (3/8-24)	0.82”	1.29”	1/8” NPT	5000	Non Swivel	Urethane	MITR-02	S1109-U70
MIT-044021X	-4 (7/16-20)	0.82”	1.29”	1/8” NPT	5000				S1109-U70
MIT-054041X	-5 (1/2-20)	1.00”	1.41”	1/4” NPT	5000			MITR-04	S1111-U70
MIT-064041X	-6 (9/16-18)	1.00”	1.41”	1/4” NPT	5000				S1111-U70
MIT-084081X	-8 (3/4-16)	1.36”	1.85”	1/2” NPT	4000			MITR-08	S1209-U70
MIT-104081X	-10 (7/8-14)	1.36”	1.85”	1/2” NPT	4000				S1209-U70
MIT-124121X	-12 (1 1/16-12)	1.68”	1.94”	3/4” NPT	4000			MITR-12	S1213-U70
MIT-144161X	-14 (1 3/16-12)	2.00”	2.13”	1” NPT	4000			MITR-16	S1216-U70
MIT-164161X	-16 (1 5/16-12)	2.00”	2.13”	1” NPT	4000				S1217-U70
MIT-204201X	-20 (1 5/8-12)	2.38”	2.13”	1-1/4” NPT	4000			MITR-20	S1222-U70

For Female SAE O-Ring Boss Threads, **High Pressure** (per SAE J1926 or ISO 11926)

Part Number	Thread Size Dim “A”	Diameter Dim “B”	Length Dim “C”	Thread Size Dim “D”	Rating PSI	Housing Style	Seal Material	Repair Kit	Main Seals Package (5)
MITH-044021X	-4 (7/16-20)	0.82”	1.29”	1/8” NPT	10,000	Non Swivel	Urethane	MITR-02	S1109-U70
MITH-064041X	-6 (9/16-18)	1.00”	1.41”	1/4” NPT	10,000			MITR-04	S1111-U70
MITH-084081X	-8 (3/4-16)	1.36”	1.85”	1/2” NPT	8000			MITR-08	S1209-U70
MITH-104081X	-10 (7/8-14)	1.36”	1.85”	1/2” NPT	7500				S1209-U70
MITH-124121X	-12 (1 1/16-12)	1.68”	1.94”	3/4” NPT	7500			MITR-12	S1213-U70
MITH-144161X	-14 (1 3/16-12)	2.00”	2.13”	1” NPT	7000			MITR-16	S1216-U70
MITH-164161X	-16 (1 5/16-12)	2.00”	2.13”	1” NPT	7000	S1217-U70			

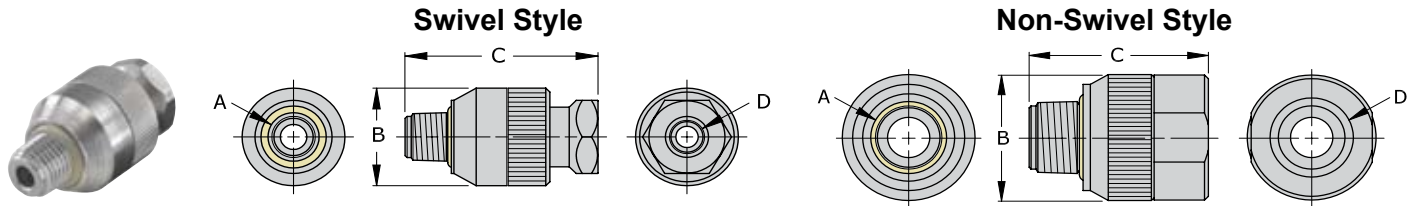
Notes:

For additional **TwistMate** sizes and configurations consult factory.

Optional seal materials available are FKM (Viton) and EPDM.

Examples: MIT-044021X**V** = FKM MIT-044021X**E** = EPDM

“Twist to Connect” Connectors for Female Threads



For BSPP Threads (per ISO 228 or BS 2779)

Part Number	Thread Size Dim "A"	Diameter Dim "B"	Length Dim "C"	Thread Size Dim "D"	Rating PSI	Housing Style	Seal Material	Repair Kit	Main Seals Package (5)
MIT-026021	1/8" BSPP	0.82"	1.24"	1/8" NPT	5000	Swivel	Urethane	MITR-020	S1109-U70
MIT-046041	1/4" BSPP	1.00"	1.41"	1/4" NPT	5000			MITR-040	S1111-U70
MIT-066061	3/8" BSPP	1.18"	1.48"	3/8" NPT	4000			MITR-060	S1113-U70
MIT-086081	1/2" BSPP	1.36"	1.85"	1/2" NPT	4000			MITR-080	S1209-U70
MIT-126121X	3/4" BSPP	1.68"	1.94"	3/4" NPT	4000	Non Swivel		MITR-12	S1213-U70
MIT-166161X	1" BSPP	2.00"	2.07"	1" NPT	4000	MITR-16		S1216-U70	

For BSPT Threads (per ISO 7 or BS 21)

Part Number	Thread Size Dim "A"	Diameter Dim "B"	Length Dim "C"	Thread Size Dim "D"	Rating PSI	Housing Style	Seal Material	Repair Kit	Main Seals Package (5)
MIT-026T021	1/8" BSPT	0.82"	1.24"	1/8" NPT	5000	Swivel	Urethane	MITR-020	S1109-U70
MIT-046T041	1/4" BSPT	1.00"	1.41"	1/4" NPT	5000			MITR-040	S1111-U70
MIT-066T061	3/8" BSPT	1.18"	1.48"	3/8" NPT	4000			MITR-060	S1113-U70
MIT-086T081	1/2" BSPT	1.36"	1.85"	1/2" NPT	4000			MITR-080	S1209-U70
MIT-126T121X	3/4" BSPT	1.68"	1.94"	3/4" NPT	4000	Non Swivel		MITR-12	S1213-U70
MIT-166T161X	1" BSPT	2.00"	2.07"	1" NPT	4000	MITR-16		S1216-U70	

For ISO O-Ring Metric Threads (per ISO 6149 or SAE J2244)

Part Number	Thread Size Dim "A"	Diameter Dim "B"	Length Dim "C"	Thread Size Dim "D"	Rating PSI	Housing Style	Seal Material	Repair Kit	Main Seals Package (5)
MIT-108021X	M10 x 1.0	0.82"	1.30"	1/8" NPT	5000	Non Swivel	Urethane	MITR-02	S1109-U70
MIT-128041X	M12 x 1.5	1.00"	1.42"	1/4" NPT	5000			MITR-04	S1110-U70
MIT-148041X	M14 x 1.5	1.00"	1.42"	1/4" NPT	5000			MITR-04	S1111-U70
MIT-168061X	M16 x 1.5	1.18"	1.56"	3/8" NPT	4000			MITR-06	S1113-U70
MIT-188061X	M18 x 1.5	1.18"	1.56"	3/8" NPT	4000			MITR-06	S1114-U70
MIT-228081X	M22 x 1.5	1.36"	1.87"	1/2" NPT	4000			MITR-08	S1116-U70

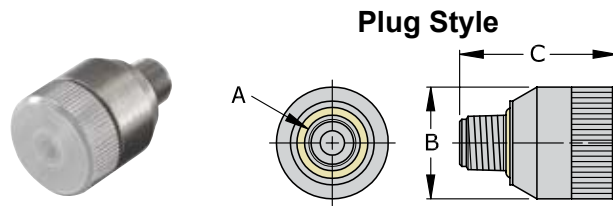
Notes:

For additional **TwistMate** sizes and configurations consult factory.

Optional seal materials available are FKM (Viton) and EPDM.

Examples: MIT-026021**V** = FKM MIT-026021**E** = EPDM

“Twist to Connect” Connectors for Female Threads



For NPT Threads (per SAE J476 or ANSI B1.20)

Part Number	Thread Size Dim “A”	Diameter Dim “B”	Length Dim “C”	Rating PSI	Housing Style	Seal Material	Repair Kit	Main Seals Package (5)
MIT-022P	1/8” NPT	0.82”	1.24”	5000	Plug	Urethane	MITR-02	S1109-U70
MIT-042P	1/4” NPT	1.00”	1.41”	5000			MITR-04	S1111-U70
MIT-062P	3/8” NPT	1.18”	1.48”	4000			MITR-06	S1113-U70
MIT-082P	1/2” NPT	1.36”	1.85”	4000			MITR-08	S1209-U70

For BSPP Threads (per ISO 228 or BS 2779)

Part Number	Thread Size Dim “A”	Diameter Dim “B”	Length Dim “C”	Rating PSI	Housing Style	Seal Material	Repair Kit	Main Seals Package (5)
MIT-026P	1/8” BSPP	0.82”	1.24”	5000	Plug	Urethane	MITR-02	S1109-U70
MIT-046P	1/4” BSPP	1.00”	1.41”	5000			MITR-04	S1111-U70
MIT-062P	3/8” BSPP	1.18”	1.48”	4000			MITR-06	S1113-U70
MIT-082P	1/2” BSPP	1.36”	1.85”	4000			MITR-08	S1209-U70

For BSPT Threads (per ISO 7 or BS 21)

Part Number	Thread Size Dim “A”	Diameter Dim “B”	Length Dim “C”	Rating PSI	Housing Style	Seal Material	Repair Kit	Main Seals Package (5)
MIT-026TP	1/8” BSPT	0.82”	1.24”	5000	Plug	Urethane	MITR-02	S1109-U70
MIT-046TP	1/4” BSPT	1.00”	1.41”	5000			MITR-04	S1111-U70
MIT-062TP	3/8” BSPT	1.18”	1.48”	4000			MITR-06	S1113-U70
MIT-082TP	1/2” BSPT	1.36”	1.85”	4000			MITR-08	S1209-U70

Notes:

For additional **TwistMate** sizes and configurations consult factory.

Optional seal materials available are FKM (Viton) and EPDM.

Examples: MIT-022PV = FKM MIT-022PE = EPDM

TwistMate Internal Repair Kits

Swivel style repair kits contains 2 internal Buna N O-rings, 2 backup rings and 1 snap ring.

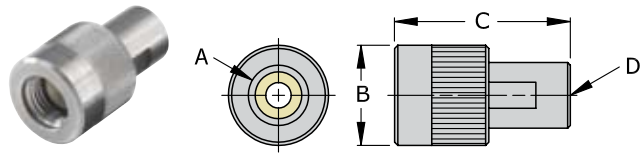
Non-Swivel style repair kits contain 1 internal Buna N O-ring and 1 backup ring.

Repair kits do not include main seal replacement.

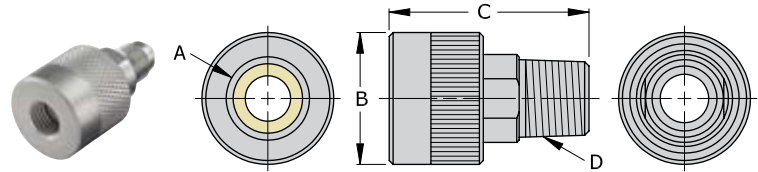
For additional kits consult factory.

“Twist to Connect” Connectors for Male Threads

Female Termination Port (F) = Dim “D”



Male Termination Port (M) = Dim “D”



For NPT Threads (per SAE J476 or ANSI B1.20)

Part Number	Thread Size Dim “A”	Diameter Dim “B”	Length Dim “C”	Thread Size Dim “D”	Rating PSI	Housing Style	Seal Material	Repair Kit	Main Seals Package (5)
MET-021022	1/8” NPT	0.82”	1.51”	1/8” NPT (M)	5000	Swivel	Urethane	METR-02	S1105-U70
MET-041042	1/4” NPT	0.94”	1.74”	1/4” NPT (M)	5000			METR-04	S1108-U70
MET-061062	3/8” NPT	1.18”	1.78”	3/8” NPT (M)	4000			METR-06	S1110-U70
MET-081082	1/2” NPT	1.60”	2.05”	1/2” NPT (M)	4000			METR-08	S1112-U70
MET-121122	3/4” NPT	1.68”	2.34”	3/4” NPT (M)	4000			METR-12	S1115-U70
MET-161162	1” NPT	2.00”	2.74”	1” NPT (M)	4000			METR-16	S1212-U70
MET-201202	1-1/4” NPT	2.37”	3.27”	1-1/4” NPT (M)	2500			METR-20	S1217-U70
MET-241161	1-1/2” NPT	2.37”	3.27”	1” NPT (F)	1000			METR-24	METB24
MET-321161	2” NPT	3.00”	2.53”	1” NPT (F)	750			METR-32	METB32
MET-401161	2-1/2” NPT	3.40”	2.54”	1” NPT (F)	500			METR-40	METB40
MET-481161	3” NPT	4.25”	2.61”	1” NPT (F)	500			METR-48	METB48

For NPT Threads, High Pressure (per SAE J476 or ANSI B1.20)

Part Number	Thread Size Dim “A”	Diameter Dim “B”	Length Dim “C”	Thread Size Dim “D”	Rating PSI	Housing Style	Seal Material	Repair Kit	Main Seals Package (5)
METH-021022	1/8” NPT	0.82”	1.51”	1/8” NPT (M)	10,000	Swivel	Urethane	METR-02	S1105-U70
METH-041042	1/4” NPT	0.94”	1.74”	1/4” NPT (M)	8000			METR-04	S1108-U70
METH-061062	3/8” NPT	1.18”	1.78”	3/8” NPT (M)	8000			METR-06	S1110-U70
METH-081082	1/2” NPT	1.60”	2.05”	1/2” NPT (M)	6000			METR-08	S1112-U70
METH-121122	3/4” NPT	1.68”	2.34”	3/4” NPT (M)	5500			METR-12	S1115-U70
METH-161162	1” NPT	2.00”	2.74”	1” NPT (M)	5000			METR-16	S1212-U70

For NPT Threads on Thin Walled Threaded Pipe (per SAE J476 or ANSI B1.20)

Part Number	Thread Size Dim “A”	Diameter Dim “B”	Length Dim “C”	Thread Size Dim “D”	Rating PSI	Housing Style	Seal Material	Repair Kit	Main Seals Package (5)
MET-041042-PT	1/4” NPT	0.94”	1.74”	1/4” NPT (M)	750	Swivel	Urethane	METR-04	METB-04PT
MET-061062-PT	3/8” NPT	1.18”	1.78”	3/8” NPT (M)	750			METR-06	METB-06PT
MET-081082-PT	1/2” NPT	1.60”	2.05”	1/2” NPT (M)	750			METR-08	METB-08PT
MET-121122-PT	3/4” NPT	1.68”	2.34”	3/4” NPT (M)	750			METR-12	METB-12PT
MET-161162-PT	1” NPT	2.00”	2.74”	1” NPT (M)	750			METR-16	METB-16PT
MET-201202-PT	1-1/4” NPT	2.37”	3.27”	1-1/4” NPT (M)	750			METR-20	METB-20PT

Notes:

For larger sized thin walled pipe threads use standard NPT styles. 1-1/2” to 2” at 750 psi and 2-1/2” to 3” at 500 psi.

For additional **TwistMate** sizes and configurations consult factory.

Optional seal materials available are FKM (Viton) and EPDM.

Examples: MET-021022V = FKM MIT-021022E = EPDM

“Twist to Connect” Connectors for Male Threads

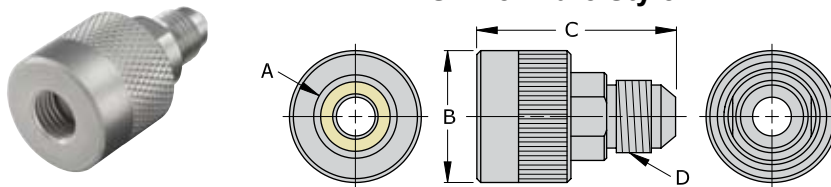
For BSPP Threads (per ISO 228 or BS 2779)

Part Number	Thread Size Dim “A”	Diameter Dim “B”	Length Dim “C”	Thread Size Dim “D”	Rating PSI	Housing Style	Seal Material	Repair Kit	Main Seals Package (5)
MET-025022	1/8” BSPP	0.80”	1.62”	1/8” NPT (M)	5000	Swivel	Urethane	METR-02	S1105-U70
MET-045042	1/4” BSPP	0.93”	1.63”	1/4” NPT (M)	5000			METR-04	S1108-U70
MET-065062	3/8” BSPP	1.20”	1.31”	3/8” NPT (M)	4000			METR-06	S1110-U70
MET-085082	1/2” BSPP	1.36”	1.46”	1/2” NPT (M)	4000			METR-08	S1112-U70

For BSPT Threads (per ISO 7 or BS 21)

Part Number	Thread Size Dim “A”	Diameter Dim “B”	Length Dim “C”	Thread Size Dim “D”	Rating PSI	Housing Style	Seal Material	Repair Kit	Main Seals Package (5)
MET-025T022	1/8” BSPT	0.80”	1.62”	1/8” NPT (M)	5000	Swivel	Urethane	METR-02	S1105-U70
MET-045T042	1/4” BSPT	0.93”	1.63”	1/4” NPT (M)	5000			METR-04	S1108-U70
MET-065T062	3/8” BSPT	1.20”	1.31”	3/8” NPT (M)	4000			METR-06	S1110-U70
MET-085T082	1/2” BSPT	1.36”	1.46”	1/2” NPT (M)	4000			METR-08	S1112-U70

Swivel Flare Style



For SAE 37° Flare - “AN” Standard, High Pressure (per SAE J514 or ISO 12151-5)

Part Number	Thread Size Dim “A”	Diameter Dim “B”	Length Dim “C”	Thread Size Dim “D”	Rating PSI	Housing Style	Seal Material	Repair Kit	Main Seals Package (5)
METH-049040	-4 (7/16-20)	0.95”	1.76”	-4 (7/16-20)	10,000	Swivel	Buna N	METR-049	S2070-0270B70
METH-069060	-6 (9/16-18)	1.20”	1.83”	-6 (9/16-18)	10,000			METR-06	S1012-B70
METH-089080	-8 (3/4-16)	1.38”	2.00”	-8 (3/4-16)	10,000			METR-08	S1015-B70
METH-109100	-10 (7/8-14)	1.51”	2.35”	-10 (7/8-14)	10,000			METR-08	S1016-B70
METH-129120	-12 (1 1/16-12)	1.70”	2.52”	-12 (1 1/16-12)	10,000			METR-12	S1018-B70

For SAE 45° Flare (per SAE J512 or J513)

Part Number	Thread Size Dim “A”	Diameter Dim “B”	Length Dim “C”	Thread Size Dim “D”	Rating PSI	Housing Style	Seal Material	Repair Kit	Main Seals Package (5)
MET-04A042B	-4 (7/16-20)	0.95”	1.76”	1/4” NPT	5000	Swivel	Buna N	METR-049	S2060-0246B70
MET-06A062N	-6 (5/8-18)	1.20”	1.83”	3/8” NPT	5000		Neoprene	METR-06	S1012-N70
MET-08A082N	-8 (3/4-16)	1.38”	2.00”	1/2” NPT	4000			METR-08	S1014-N70
MET-10A082N	-10 (7/8-14)	1.51”	2.35”	1/2” NPT	4000			METR-08	S1015-N70
MET-12A122N	-12 (1 1/16-14)	1.70”	2.52”	3/4” NPT	4000			METR-12	S1117-N70

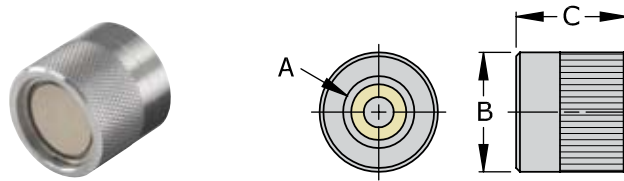
Notes:

For additional **TwistMate** sizes and configurations consult factory.

Optional seal materials available are FKM (Viton) and EPDM.

Examples: METH-049040V = FKM MET-049040E = EPDM

“Twist to Connect” Connectors for Male Threads



Cap Style for NPT Threads (per SAE J476 or ANSI B1.20)

Part Number	Thread Size Dim “A”	Diameter Dim “B”	Length Dim “C”	Rating PSI	Housing Style	Seal Material	Repair Kit	Main Seals Package (5)
MET-021C	1/8” NPT	0.80”	0.83”	5000	Cap	Urethane	METR-02	S1105-U70
MET-041C	1/4” NPT	0.93”	0.88”	5000			METR-04	S1108-U70
MET-061C	3/8” NPT	1.20”	0.90”	4000			METR-06	S1110-U70
MET-081C	1/2” NPT	1.36”	0.97”	4000			METR-08	S1112-U70

Cap Style for BSPP Threads (per ISO 228 or BS 2779)

Part Number	Thread Size Dim “A”	Diameter Dim “B”	Length Dim “C”	Rating PSI	Housing Style	Seal Material	Repair Kit	Main Seals Package (5)
MET-025C	1/8” BSPP	0.80”	0.83”	5000	Cap	Urethane	METR-02	S1105-U70
MET-045C	1/4” BSPP	0.93”	0.88”	5000			METR-04	S1108-U70
MET-065C	3/8” BSPP	1.20”	0.90”	4000			METR-06	S1110-U70
MET-085C	1/2” BSPP	1.36”	0.97”	4000			METR-08	S1112-U70

Cap Style for BSPT Threads (per ISO 7 or BS 21)

Part Number	Thread Size Dim “A”	Diameter Dim “B”	Length Dim “C”	Rating PSI	Housing Style	Seal Material	Repair Kit	Main Seals Package (5)
MET-025TC	1/8” BSPT	0.80”	0.83”	5000	Cap	Urethane	METR-02	S1105-U70
MET-045TC	1/4” BSPT	0.93”	0.88”	5000			METR-04	S1108-U70
MET-065TC	3/8” BSPT	1.20”	0.90”	4000			METR-06	S1110-U70
MET-085TC	1/2” BSPT	1.36”	0.97”	4000			METR-08	S1112-U70

Notes:

For additional **TwistMate** sizes and configurations consult factory.

Optional seal materials available are FKM (Viton) and EPDM.

Examples: MET-021CV = FKM MET-021CE = EPDM

TwistMate Internal Repair Kits

Swivel style repair kits contains 2 internal Buna N O-rings, 2 backup rings and 1 snap ring.

Non-Swivel style repair kits contain 1 internal Buna N O-ring and 1 backup ring.

Repair kits do not include main seal replacement.

For additional kits consult factory.

TwistMate Part Number Key

MIT H - 04 2 04 1 X -

Model
MET - Mechanical External Thread
MIT - Mechanical Internal Thread

Optional Configurations
Blank = Standard
C = For curved surfaces
H = High pressure

Connector Size	NPT BSPP/T	SAE	Metric
02	1/8	--	--
03	--	3/8-24	--
04	1/4	7/16-20	--
05	--	1/2-20	--
06	3/8	9/16-18 or 5/8-18	--
08	1/2	3/4-16	--
10	--	7/8-14	M10 x 1
12	3/4	1 1/16-12	M12 x 1
14	--	1 3/16-12	M14 x 1
16	1	1 5/16-12	M16 x 1
18	--	--	M18 x 1.5
20	1-1/4	1 5/8-12	M20 x 1.5
22	--	--	M22 x 1.5
24	1-1/2	1 7/8-12	--
32	2	--	--
40	2-1/2	--	--
48	3	--	--
64	4	--	--

Connector Type
1 = Female NPT
2 = Male NPT
3 = Female SAE, O-ring Boss
4 = Male SAE O-ring Boss
5 = Female BSPP
5T = Female BSPT
6 = Male BSPP
6T = Male BSPT
7 = Female metric
8 = Male metric
9 = Female SAE 37° flare
0 = Male SAE 37° flare
A = Female SAE 45° flare

Special Options
Blank = None
PT = For thin walled pipe threads

Seal Material
Blank = Standard seal (see individual part numbers)
B = Buna-N
E = EPDM
N = Neoprene
S = Silicone
U = Urethane
V = Viton

Connector Configuration
Blank = Swivel style
X = Non-Swivel connector

Termination Type
1 = Female NPT
2 = Male NPT
3 = Female SAE, O-ring Boss
4 = Male SAE O-ring Boss
5 = Female BSPP
5T = Female BSPT
6 = Male BSPP
6T = Male BSPT
7 = Female metric
8 = Male metric
9 = Female SAE 37° flare
0 = Male SAE 37° flare
A = Female SAE 45° flare

Termination Size	NPT	SAE
02	1/8	--
04	1/4	7/16-20
06	3/8	9/16-18
08	1/2	3/4-16
10	--	7/8-14
12	3/4	1 1/16-12
16	1	--
20	1-1/4	--
24	1-1/2	--
C = Cap		
P = Plug		

Notes:

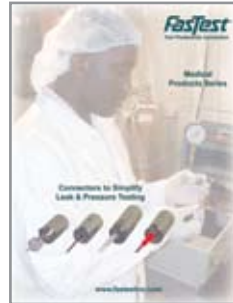
Part Number Keys are to assist in IDENTIFICATION ONLY.
Verify new part numbers with factory; some configurations are not possible.

Additional Products and Brochures from FasTest



Engineering & Application Guide

Engineering and Application Guide to Connectors for Pressure Testing & Processing details our complete offering for all applications.



Medical Connectors

Versatile product line of connectors for sealing and testing a wide variety of medical products and drug delivery devices.



Refrigeration Connectors

The **CoreMax** system of high flow processing valves and connectors for the refrigeration manufacturing and service industry.

Additional Services from FasTest

Buy Fast-est - Several models of our most popular **TwistMates** connectors and seals featured in this brochure are available for immediate purchase in our on-line store in small quantities.

To see what models are currently available as well as other selected connectors please visit our on-line store at www.fastestinc.com or contact **FasTest** for details.

Buy Fast-est

ReConnect - Our connector refurbishment and competitor replacement program ensures proper connector operation and performance and extends the service life and warranty of your investment. Connectors routinely maintained can be refurbished or replaced economically relative the cost of a new connector replacement. Visit www.fastestinc.com/reconnect or contact **FasTest** for details.

ReConnect

Custom Applications - Customized products are available for unusual or unique connection requirements.

Limited Express Warranty

FasTest Inc. warrants its products against defects in workmanship and materials for 12 months from the date of sale by FasTest Inc. or its authorized distributor. This warranty is void if the product is misused, tampered with or used in a manner that is contrary to FasTest Inc.'s written recommendations and/or instructions.

FasTest Inc. does not warrant the suitability of the product for any particular application. Determining product application suitability is solely the customer's responsibility. FasTest Inc. is not liable for consequential or other damages including, but not limited to, loss, damage, personal injury, or any other expense directly or indirectly arising from the use of or inability to use its products either separately or in combination with other products.

ALL OTHER WARRANTIES EXPRESS OR IMPLIED, WHETHER ORAL, WRITTEN OR IN ANY OTHER FORM, INCLUDING BUT NOT LIMITED TO WARRANTIES OF MERCHANTABILITY OR FITNESS FOR A PARTICULAR PURPOSE ARE EXPRESSLY EXCLUDED.

The sole and exclusive remedy under this warranty is limited to replacement of the product or an account credit in the amount of the original selling price, at the option of FasTest Inc. All allegedly defective products must be returned prepaid transportation to FasTest Inc., together with information describing the product's performance, unless disposition in the field is authorized in writing by FasTest Inc.

Notifications and Copyright

Specifications in this brochure are subject to change without notice. FasTest also reserves the right to make modifications and makes no guarantee of the accuracy of the information contained herein.

© 2010 FasTest Inc. All rights reserved. No part of this publication may be reproduced with written without permission.