

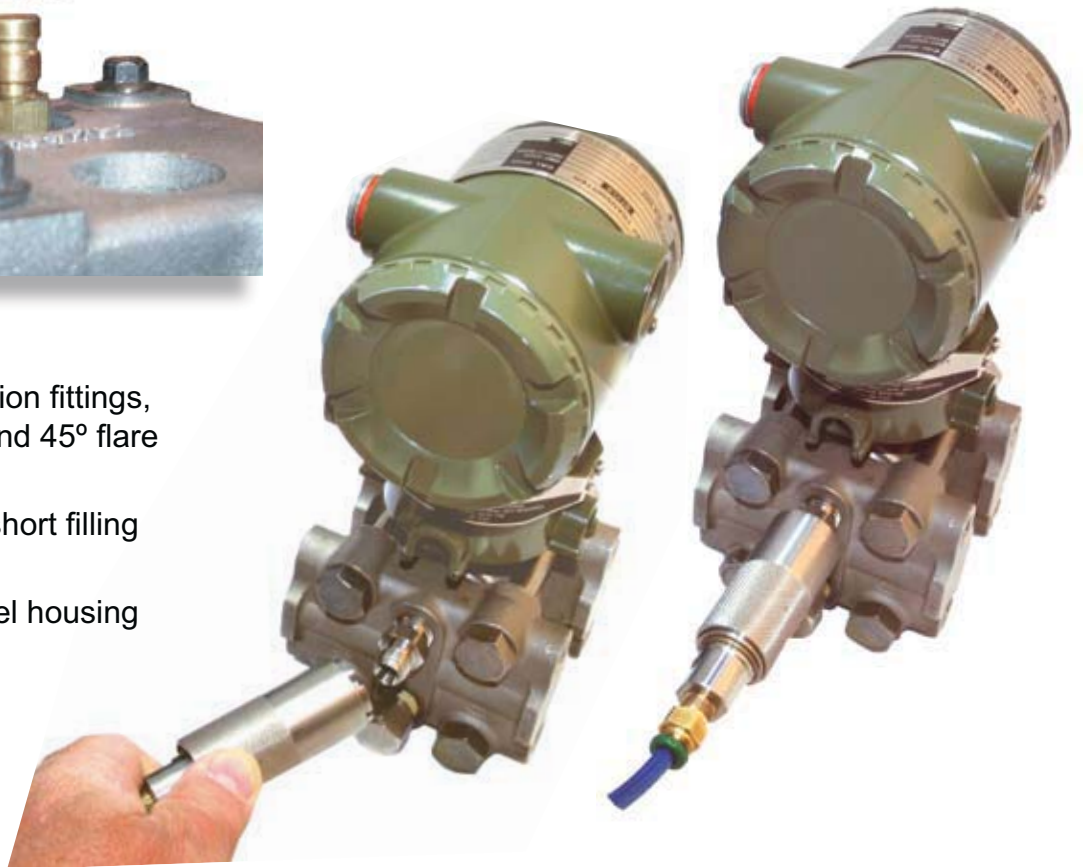
# 60 and 70 Series Connectors

**FastTest**<sup>®</sup>  
Your Productivity Connection



- Instant connections from vacuum to 750 psi
- No wrenches, sealants or thread damage
- Connect to expanded, flare, barbed, beaded and form end tubes

- Connect to compression fittings, NPT, SAE 37° "AN" and 45° flare male threads
- High flow design for short filling and testing times
- Rugged stainless steel housing

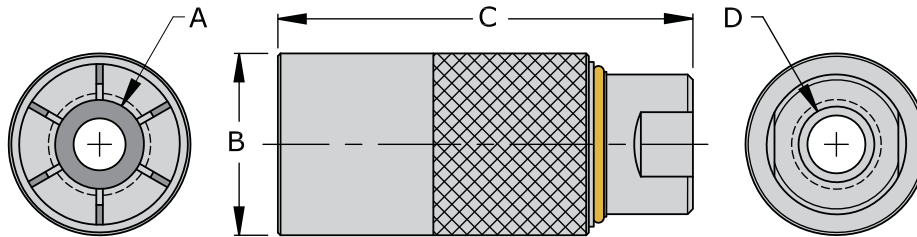


## **Sleeve Actuated Connectors for Male Threads & Tubing**

**FastTest** sleeve actuated **60 and 70 Series** connectors are the preferred method for fast, safe and repeatable connections to a wide variety of thread and tube profiles used in the process and manufacturing industries for filling, pressure and leak testing, and instrument calibration. Simply pull back on latching sleeve, insert male threaded or tube end into the connector and push the latching sleeve forward to complete the connection. Remove test pressure and pull back the latching sleeve to release the connection.

---

## Dimensional Drawing for 60 / 70 Series Connectors



### 60 Series for NPT Pipe Threads

Part Number	Connects to Dim "A"	Diameter Dim "B"	Length Dim "C"	Term. Thread Dim "D"	Rating PSI	Housing Material	Seal Material	Main Seals Package (5)
60G-1T02	1/8" NPT	0.99"	2.95"	1/8" NPT	750	Stainless Steel	Buna N	S1105-B70
60G-1T04	1/4" NPT	1.19"	2.95"	1/4" NPT				S1109-B70
60G-1T04021	1/4" NPT	1.19"	2.95"	1/8" NPT				S1109-B70
60G-1T06	3/8" NPT	1.38"	3.15"	3/8" NPT				S1111-B70
60G-1T08	1/2" NPT	1.38"	3.15"	1/2" NPT				S1112-B70
60G-1T08021	1/2" NPT	1.38"	3.15"	1/8" NPT				S1112-B70

### 60 Series for SAE 45° Flare

Part Number	Connects to Dim "A"	Diameter Dim "B"	Length Dim "C"	Term. Thread Dim "D"	Rating PSI	Housing Material	Seal Material	Main Seals Package (5)
60G-A04	-4 (7/16-20)	0.99"	2.95"	1/8" NPT	750	Stainless Steel	Buna N	S2060-0246-B70
60G-A06	-6 (5/8-18)	1.38"	3.15"	3/8" NPT				S1012-B70
60G-A08	-8 (3/4-16)	1.38"	3.15"	3/8" NPT				S1014-B70
60G-A10	-10 (7/8-14)	1.78"	3.54"	3/4" NPT				S1015-B70
60G-A12	-12 (1 1/16-14)	1.78"	3.54"	3/4" NPT				S1117-B70

### 60 Series for SAE 37° Flare - "AN" Type

Part Number	Connects to Dim "A"	Diameter Dim "B"	Length Dim "C"	Term. Thread Dim "D"	Rating PSI	Housing Material	Seal Material	Main Seals Package (5)
60G-049	-4 (7/16-20)	0.99"	2.95"	1/8" NPT	750	Stainless Steel	Buna N	S1010-B70
60G-069	-6 (9/16-18)	1.19"	2.95"	3/8" NPT				S1012-B70
60G-089	-8 (3/4-16)	1.58"	3.15"	3/8" NPT				S1014-B70

### 60 Series for Double Ferrule Compression Style Fittings

Part Number	Connects to Dim "A"	Diameter Dim "B"	Length Dim "C"	Term. Thread Dim "D"	Rating PSI	Housing Material	Seal Material	Main Seals Package (5)
60G-CF04	-4 (7/16-20)	1.19"	2.95"	1/8" NPT	750	Stainless Steel	Buna N	S1008-B70

Note: Additional sizes and seal options available for all 60 Series connectors. Consult factory for details.

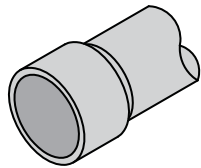
## 70 Series Connectors

### How to Order

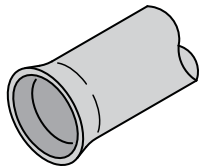
The 70 Series connectors are designed for mechanical gripping on a feature of the test piece and pressure enhanced sealing. Connectors are designed, engineered and manufactured to your specific application requirements.

For part number and a price quotation:

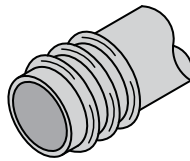
- 1) Identify the gripping and sealing areas of your test piece.
- 2) Contact FasTest with information on test pressure, test media and provide a detailed drawing, including tolerances, of your test piece.
- 3) Two sample parts will be required at the time of order for final design and testing purposes.



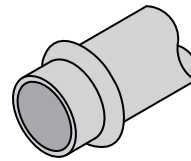
**Expanded Tube**



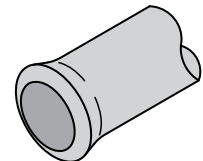
**Flared Tube**



**Barbed Tube**



**Beaded Tube**



**Form End Tube**

### 70 Series for Expanded, Flared, Barbed, Beaded and Form End Tubes

Body Size	Range (OD) Dim "A"	Diameter Dim "B"	Length Dim "C"	Term. Thread Dim "D"	Rating PSI	Housing Material	Seal Material	Main Seals Package (5)
1	Up to 0.32"	0.87"	2.95"	1/8" NPT	750	Stainless Steel	Determined by application	Determined by application
2	0.32" to 0.43"	0.99"	2.95"	1/8" NPT				
3	0.43" to 0.59"	1.19"	2.95"	1/4" NPT				
4	0.59" to 0.79"	1.38"	3.15"	3/8" NPT				
5	0.79" to 0.98"	1.58"	3.15"	1/2" NPT				
6	0.98" to 1.18"	1.78"	3.54"	3/4" NPT				
7	1.18" to 1.42"	1.97"	3.54"	3/4" NPT				
8	1.42" to 1.65"	2.17"	3.54"	3/4" NPT				
9	1.65" to 1.85"	2.36"	3.54"	1" NPT				
10	1.85" to 2.04"	2.76"	3.54"	1 1/4" NPT				

Note: Additional seal options available for all 70 Series connectors. Consult factory for details.